

Guest
Louise Sigvardt

Humanscale **kvadrat**

Global Partnership



Guest

Type: Upholstery

Composition: 100% recycled polyester (PET)

Number of colours: 13

Width: 140cm

Guest

Guest is a soft chenille upholstery textile crafted from 100% recycled polyester, with a warm melange expression. It combines outstanding comfort with strong performance and comes in a timeless scale of colours designed by Louise Sigvardt.

The delicate irregularity of *Guest*'s melange surface derives from a construction that unites a dope-dyed yarn and a white chenille yarn. The lighter the colour of the dyed yarn, the more pronounced the melange effect.

Drawing on her work across various creative fields, including fashion and interiors, Louise Sigvardt created the colour palette for *Guest* to further emphasise its soft hand. The versatile range focuses on natural tones, spanning from dark to light and warm to cold, punctuated by saturated pastels such as rust red, buttery yellow, and sky blue.

Louise Sigvardt: *"When creating the palette for Guest, I was interested in exploring the spaces where everyday colours meet. Like looking out on a foggy day or at paintings by Rothko, the colour combinations are abstracted, creating endless crossover tones. Guest features multiple variations of grey, with each nuance capable of something different."*

Guest's welcoming character, recycled profile, and high performance make it ideal for consciously designed spaces that seek to offer a home from home.

Louise Sigvardt

Louise Sigvardt is a co-founder of the acclaimed Bunn Studio, a Copenhagen-based design studio working across fashion, architecture, and design. In recent years, they have collaborated with the celebrated fashion brands Everlane and Marimekko, and the furniture house Radnor. Their work has been recognised with numerous awards and showcased in leading international magazines.

Louise's background as a textile designer is evident in Bunn's rich yet minimal approach to design where texture is always a key element. For Louise, design is an immersive experience that begins with a narrative, an emotion or a captivating visual. She cites the application of textiles as the motivation in her career; *"I found out that I loved working with textiles, but what fascinates me even more, are all the different areas of application."*



Guest

Design: Louise Sigvardt

Type: Upholstery, panel fabric

Composition: 100% recycled polyester

Yarn type: Filament / Chenille

Binding: Jacquard

Width: Approx. 140 cm, 55 inches

Weight: Approx. 480 g/lin.m, 15 oz/ly

Repeat: None

Colour difference may occur

Cleaning: Vacuum clean frequently, ideally every week if fixed covers. Remove stains as soon as they occur, with clean warm water or sparkling water. Extraction clean when necessary. Extraction cleaning might dissolve water-based glue. Pay attention to temperature and amount of cleaning fluid.

Also washable at 30°C, half wash load. Drip drying.

Mount in moist condition. Shrinkage app. 1% at 30°C..

Disinfection, see kvadrat.dk

More info: Care and maintenance kvadrat.dk



Guest

Abrasion

App. 100.000 Martindale rubs, EN ISO 12947

Colour change: note 4-5 after 6000 rubs

Pilling

Note 4, EN ISO 12945

Seam slippage

Seam parallel to warp: 2.5 mm parallel to weft: 3.0 m

EN ISO 13 936-2 180 Newton

Lightfastness

Note 5-7 ISO 105-B02

Fastness to rubbing

Dry note 4-5 ISO 105-X12

Wet note 4-5 ISO 105-X12

Flame resistance

AS/NZS 1530.3

AS/NZS 3837 class 2

ASTM E84 Class A Unadhered

ASTM E84 Class A Adhered

BS 5852 Part 1 with treatment *

BS 5852 Crib 5 with treatment *

BS 7176 Low Hazard

EN 1021-1/2

IMO FTP Code 2010 : Part 8

NFPA 701 with treatment *

SN 198 898 5.2 with treatment *

US Cal. Bull. 117-2013

Free from added flame retardant chemicals as standard

** To pass this test flame retardant treatment is necessary.*

We are looking into more environmentally friendly alternatives but for now the external finisher may use a treatment containing halogen based flame retardants

ACT Guidelines Woven fabrics**Flammability**

US Cal. Bull. 117-2013

Dry & Wet Crocking AATCC 8

Dry Crocking: Grade 4.5-5.0

Wet Crocking: Grade 4.0-5.0

Colour Fastness to Light AATCC 16

Grade 4.0-5.0 minimum 40 hours

Physical properties

Pilling Class 4 ASTM D4970

Breaking Strength warp 347 / weft 96 lbs. ASTM D5034

Seam Slippage warp 98 / weft 107 lbs. ASTM D 4034

Abrasion ASTM D4966

100.000 cycles Martindale – High Traffic / Public Spaces

Quality benefits

Complies with Möbelfakta

Good abrasion

Very good lightfastness

Washable

Environmental benefits

Complies with EU Ecolabel

Recycled content

Free of intentionally added PFAS

Mono-material designed for circularity

REACH compliant

Californian Proposition 65 list compliant

LBC Red list compliant

Healthier Hospitals compliant

Green building certificates

Greenguard Gold: Low chemical emission

Health Product Declaration (HPD): Declaring textile content and substance

Country of origin

Turkey

Launch

2024

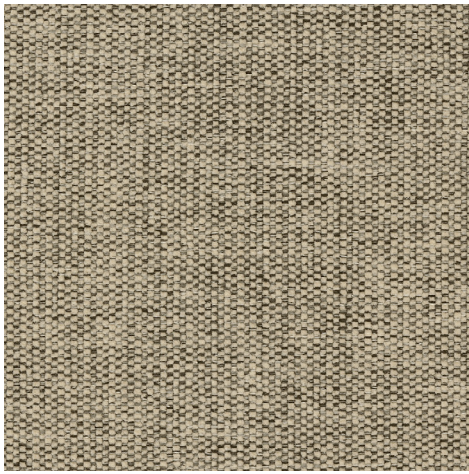
Kvadrat packaging and cardboard is recyclable. Cardboard material is FSC certified and / or contains recycled content.

Kvadrat A/S is ISO 9001 and ISO 14001 certified

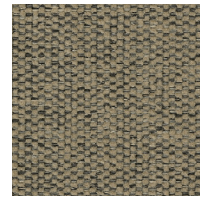
For further information

kvadrat.dk

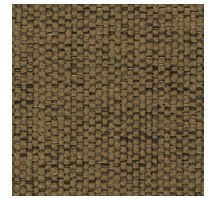
Guest



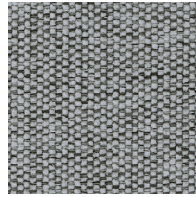
HS GU21 / KV 0210



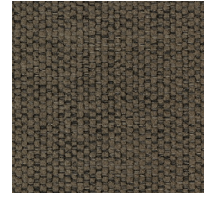
HS GU25 / KV 0250



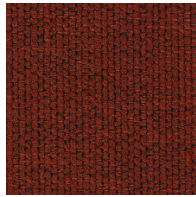
HS GU36 / KV 0360



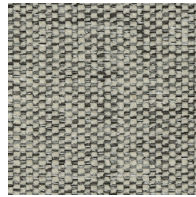
HS GU12 / KV 0120



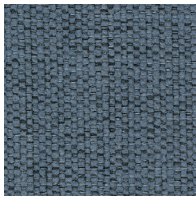
HS GU27 / KV 0270



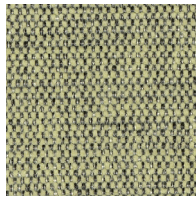
HS GU56 / KV 0560



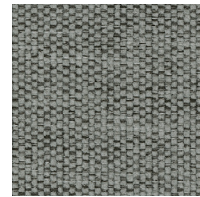
HS GU11 / KV 0110



HS GU76 / KV 0760



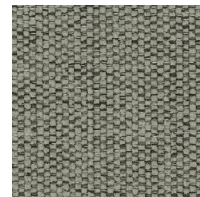
HS GU42 / KV 0420



HS GU14 / KV 0140



HS GU78 / KV 0780



HS GU15 / KV 0150



HS GU19 / KV 0190