



## Gravity

Collection(s)	Gravity
Colour(s)	Apple, Brick, Chocolate, Cloud, Forest, Ice, Mocha, Onyx, Petal, Pomegranate, Sand, Scarlet, Slate, Steel, Teal
Product Type(s)	Upholstery (Heavy Commercial)
Attributes	Oekotex Standard 100
Styles	Plain, Texture, Modern
Composition	93% Polyester 5% Cotton 2% Nylon
Pattern Match	No
Pattern Repeat (cm)	Plain
Railroaded	Plain Fabrics marked Railroaded 'Plain' can be cut in either direction at the discretion of the manufacturer, and in consultation with the customer's preference. Fabric is sampled in the direction it comes up the roll (Non Railroaded).
Width (cm)	140
Roll Size (approx)	45m
Weight (gsm)	400
Origin	Non European
Stain Repellent	No
FIAA Care Label	<a href="#">FIAA Care Label 3 - Non Pile Fabrics</a>
Usage	  Upholstery      Cushion
Guarantee	3 Years in accordance with our product type and care instructions

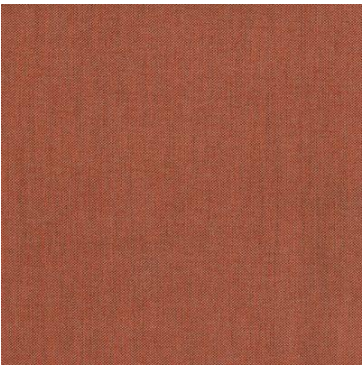
## Test Results

Martindale (ISO 12947, 12kPA)	72,000 Cycles
Seam Slippage (mm) (ISO 13936-2, Load 180)	Warp 2.1, Weft 3
Pilling Resistance (ISO 12945-2)	5
Colourfastness to Light Xenon arc (ISO 105-B02, blue std 6)	>6
Colourfastness to Rubbing (ISO 105-X12)	Dry 5, Wet 5
Free and Hydrolysed Formaldehyde (ISO 14184-1:1998)	Not Detectable
Flammability AS/NZS 1530.3 - 1999	
Ignitability (0-20)	10
Spread of Flame (0-10)	0
Heat Involved (0-10)	3
Smoke Developed (0-10)	5
Group Number AS5637.1	1
Oekotex Standard 100	13.HCN.35063 HOHENS

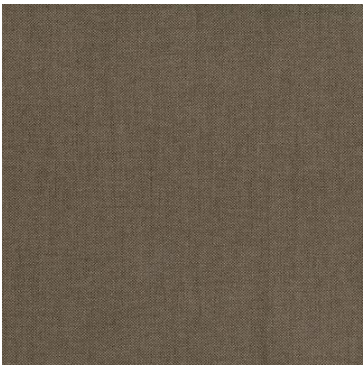
# Gravity



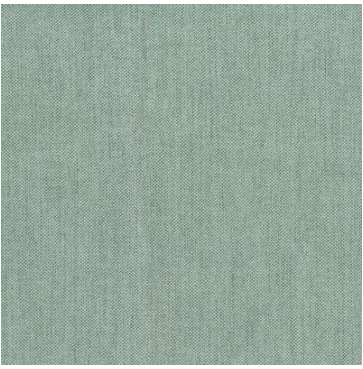
Apple



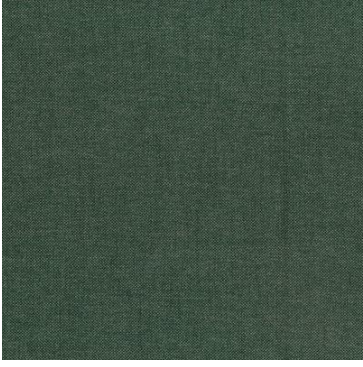
Brick



Chocolate



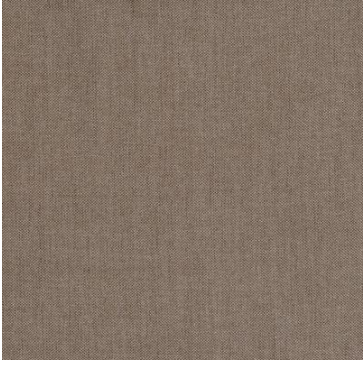
Cloud



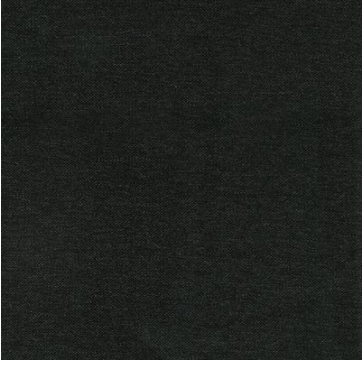
Forest



Ice



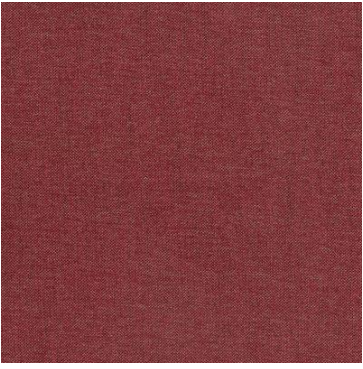
Mocha



Onyx



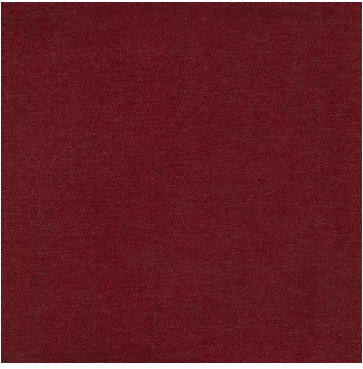
Petal



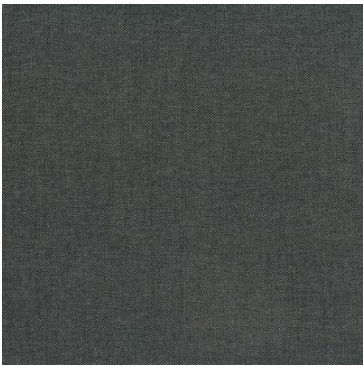
Pomegranate



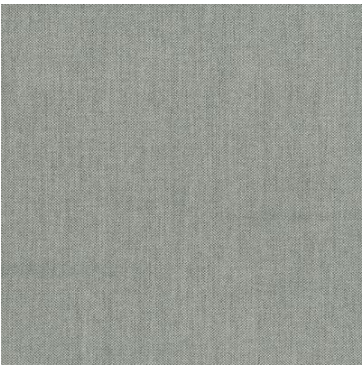
Sand



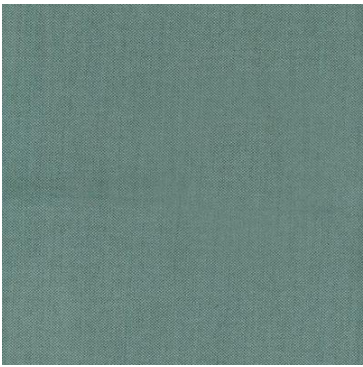
Scarlet



Slate



Steel



Teal