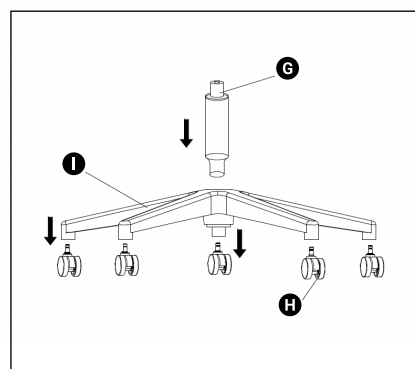
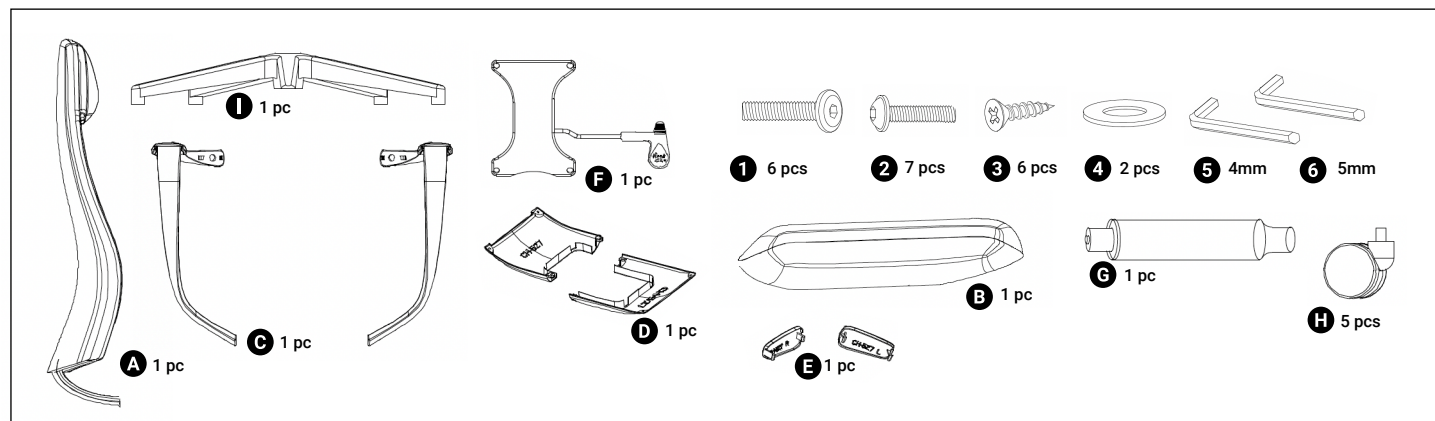


# Director Assembly Guide

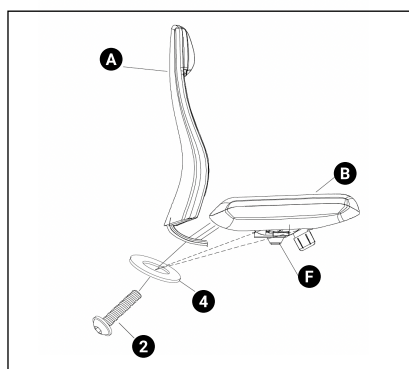
ChairSolutions

Mid Back and High Back

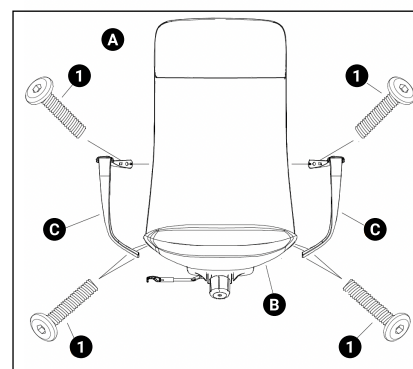
## What's in the box



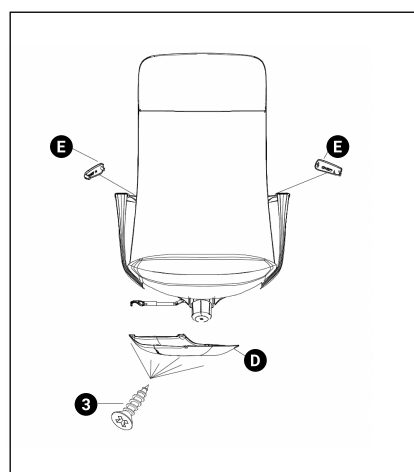
Step 1



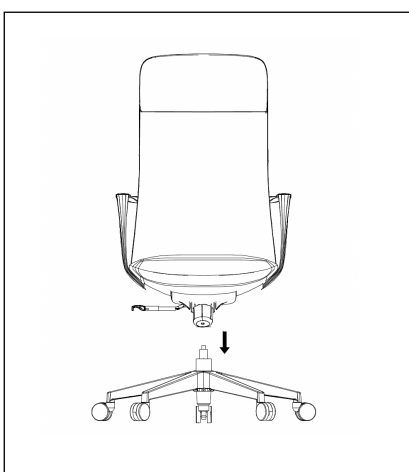
Step 2



Step 3



Step 4



Step 5



Step 6

**Step 1** - Insert 5 x castors, place gas lift into base

**Step 2** - Fix mechanism to seat,  
fix back bar to seat

**Step 3** - Fix arms to seat and back on both  
left and right side

**Step 4** - Screw under seat cover on

**Step 5** - Place chair onto base

**Step 6** - Chair is complete and ready to use