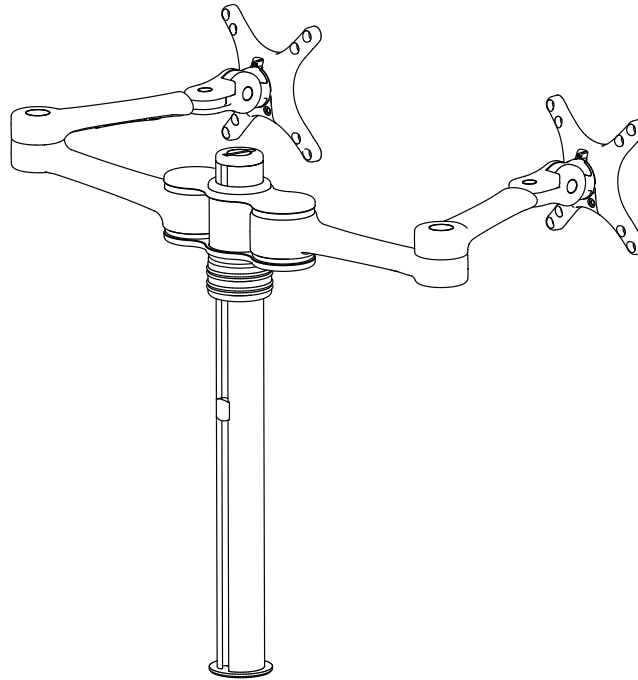
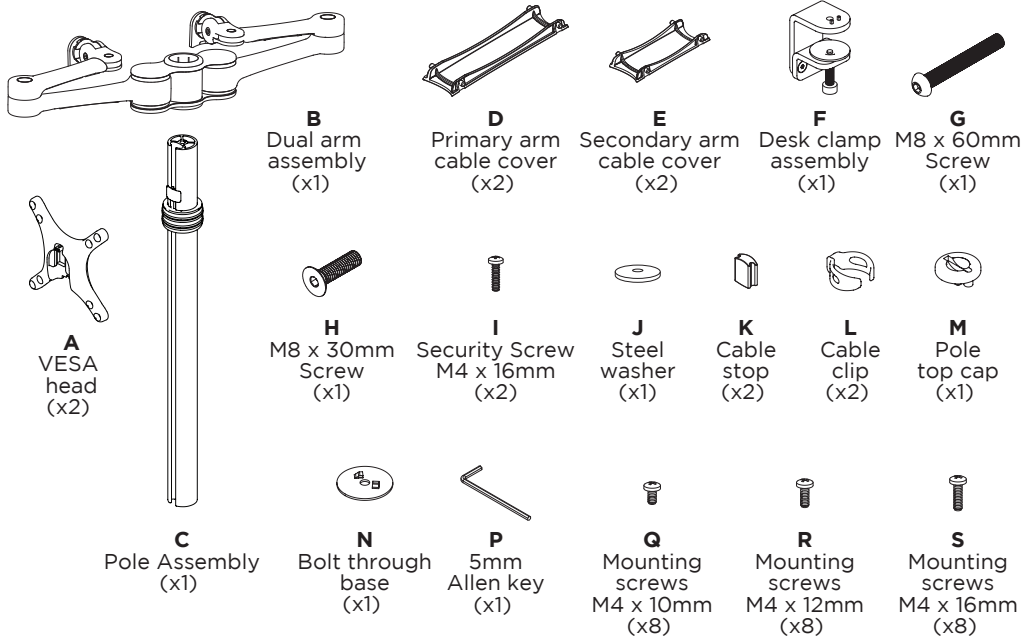


Dual Arm Desktop Monitor Mount



COMPONENT CHECKLIST



Desk

REQUIRED TOOLS

- Phillips Head Screwdriver

WEIGHT RANGE

Flat Monitors

0 - 8kg
(0 - 17.6lbs)

Curved Monitors

0 - 5.5kg
(0 - 12lbs)

IMPORTANT INFORMATION

! Please ensure this product is installed as per these installation instructions.

! This product is compatible with the range of AF Poles and arms.

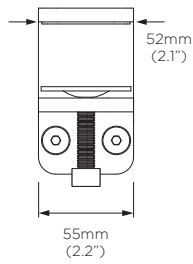
! The manufacturer accepts no responsibility for incorrect installation.

! Curved monitors, deep devices (such as all-in-one PCs) and offset VESA locations exert additional leverage that can exceed the capacity of the mount even though the monitor weight may be within the stated range. Please contact Atdec if you would like further information.

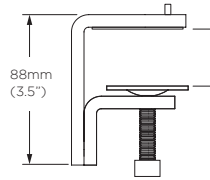
1. Desk overview

The desk clamp bracket can be repositioned to suit different mounting surface thicknesses

Desk Clamp

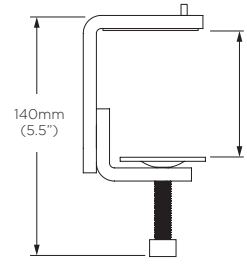


Default



MIN THICKNESS - 0mm (0")
MAX THICKNESS - 39mm (1.5")

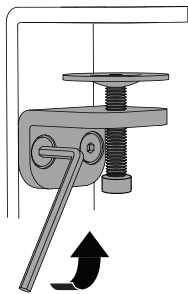
Inverted



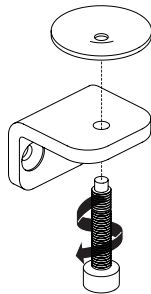
MIN THICKNESS - 35mm (1.4")
MAX THICKNESS - 76mm (3")

2. How to reconfigure desk clamp

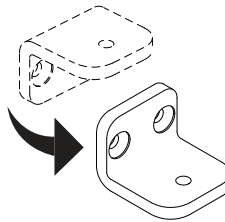
2.1 Remove screws (M8 x 16mm Countersunk screw)



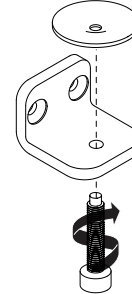
2.2 Remove clamp plate



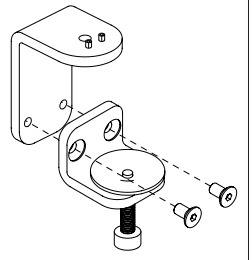
2.3 Invert bracket



2.4 Replace clamp plate

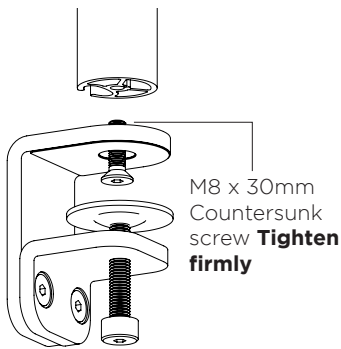


2.5 Reattach bracket

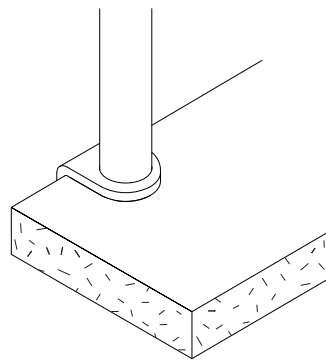


3. Clamp mount configuration

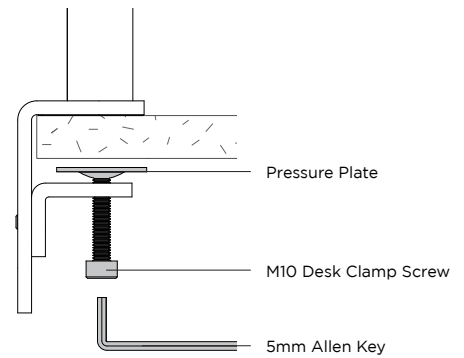
3.1 Attach clamp to post



3.2 Place in desired location

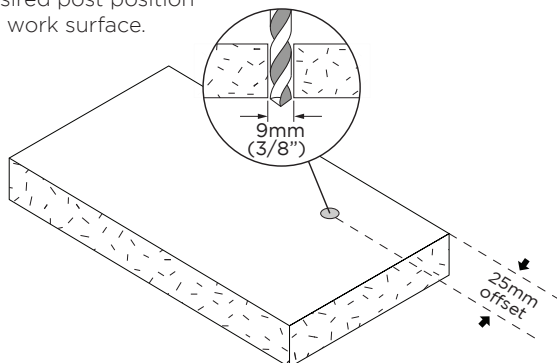


3.3 Screw pressure plates in and **tighten firmly**.

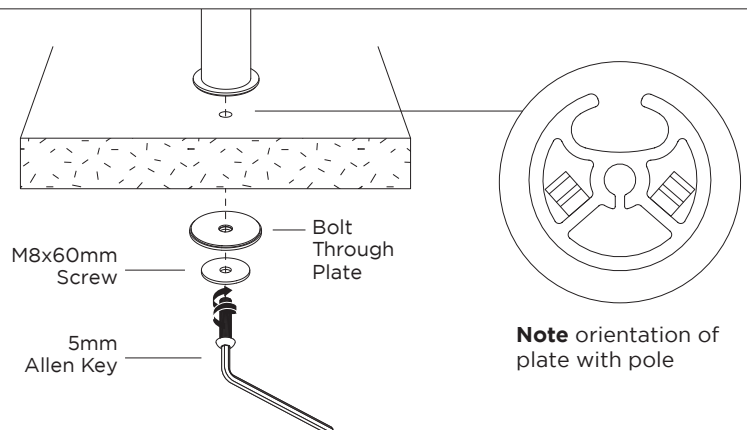


4. Bolt through - Drill Hole

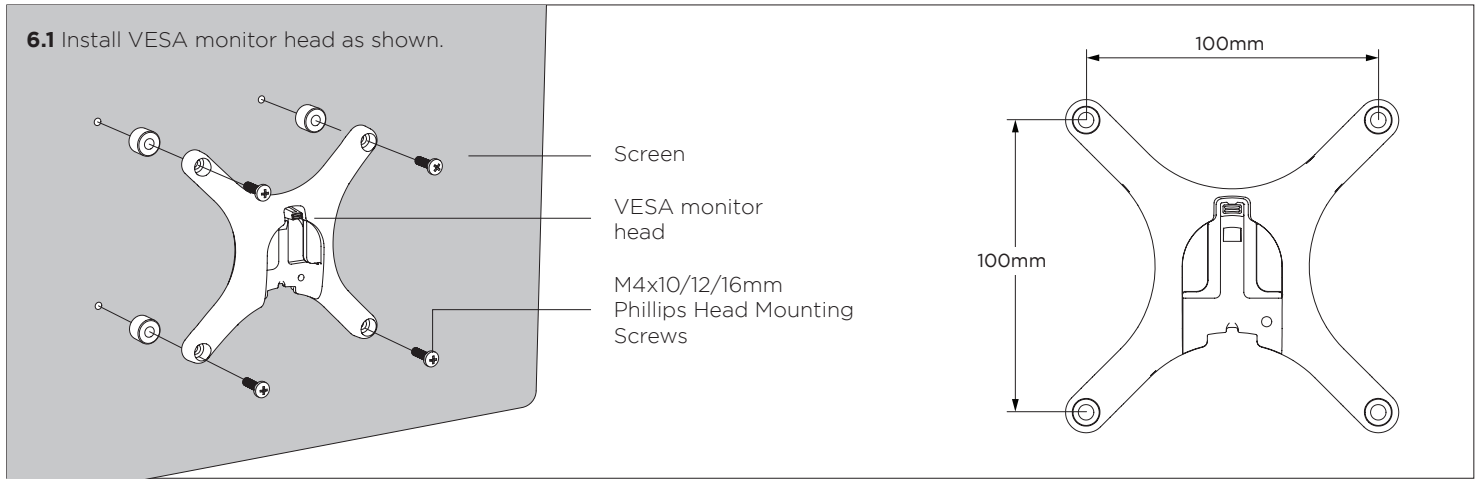
4.1 Drill 9mm hole in desired post position on work surface.



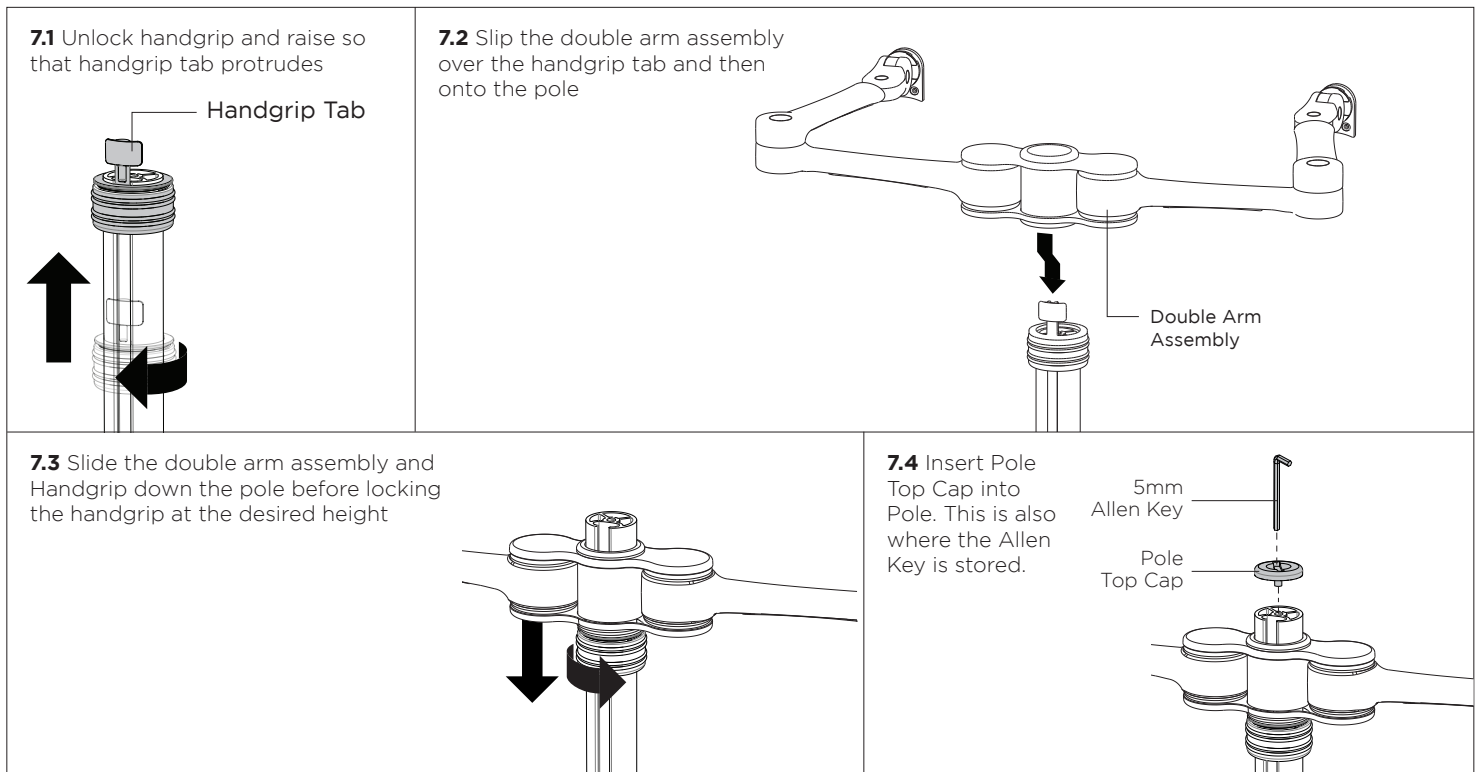
5. Bolt Pole to work surface



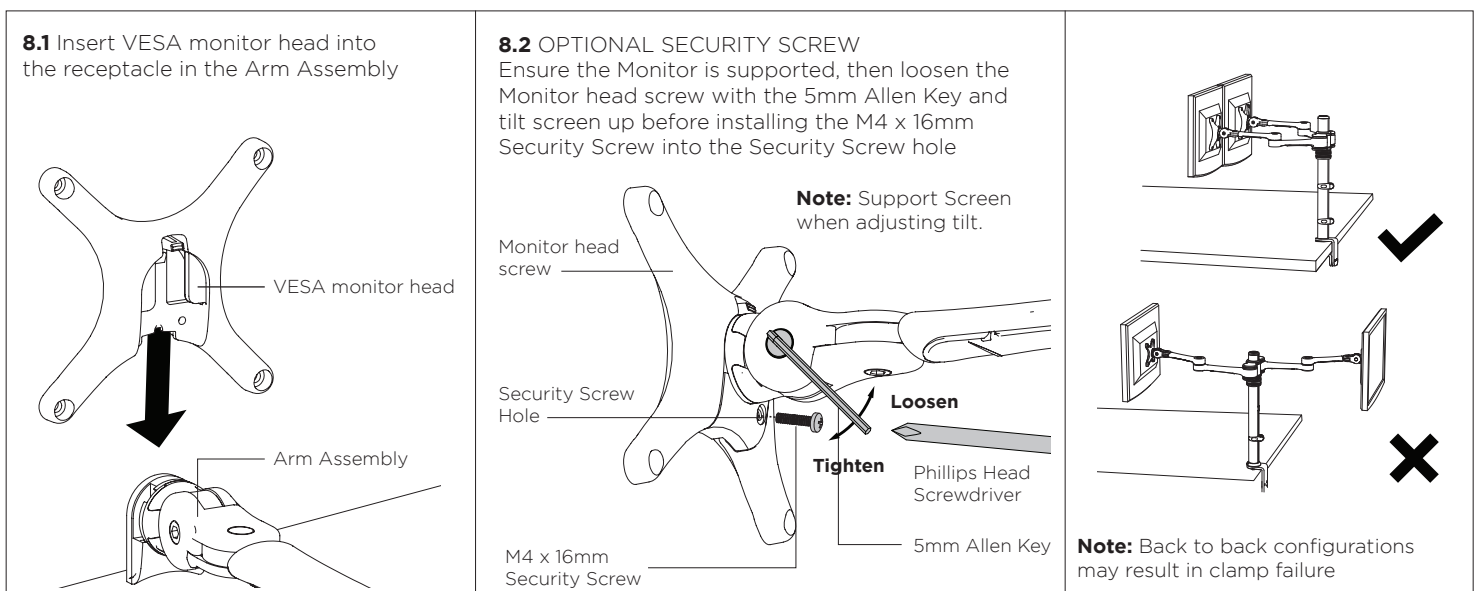
6. Install VESA monitor head



7. Install arm assembly

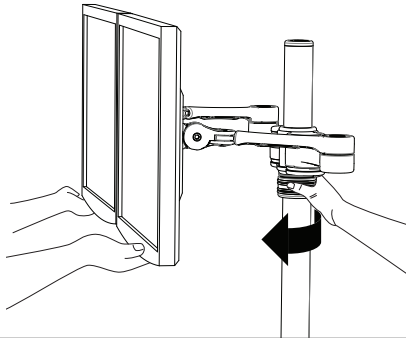


8. Mounting Monitor

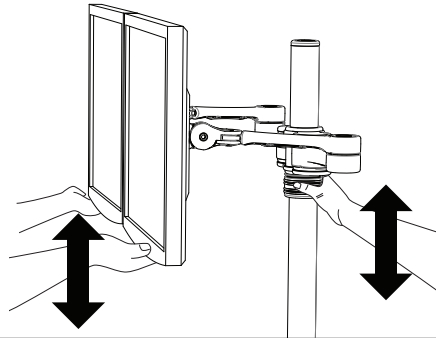


9. Adjusting Height

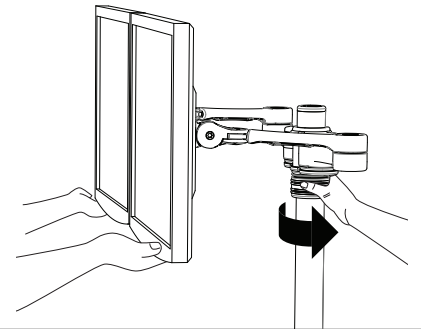
9.1 Unlock Handgrip ensuring both screens and arm assembly are supported



9.2 Lift/Lower Screens to the desired height. Move both Screens and Arm assembly together

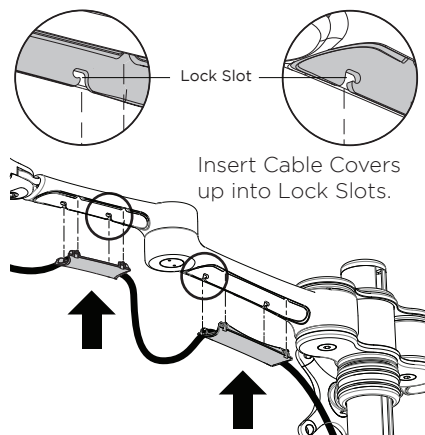


9.3 Lock Handgrip firmly

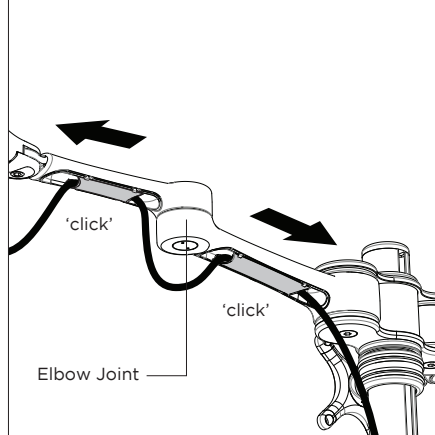


10. Cable Management

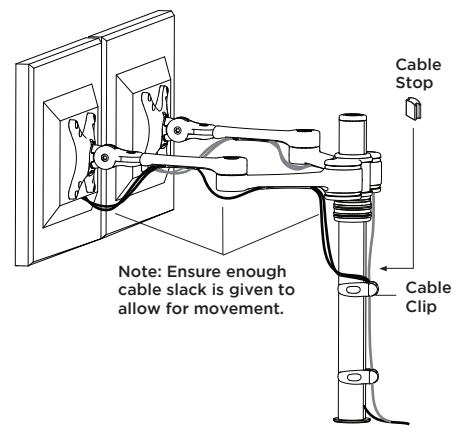
10.1 After plugging in your cables, install the Cable Covers



10.2 Push Cable Covers away from Elbow Joint to secure in place



10.3 Cable Clips and Cable Stops can be installed to further manage cables

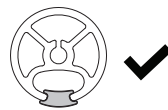


11. Insert Cable Stops

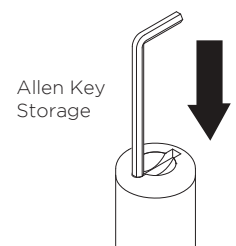
11.1 Insert Cable Stop on one edge of the Pole Slot



Note: Press down firmly onto the other edge of the Cable Stop and hold. This allows the rear profile to flex in place

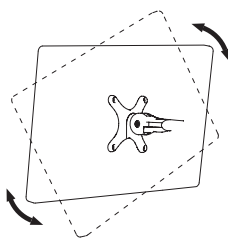


11.2 Insert allen key into top cap on pole

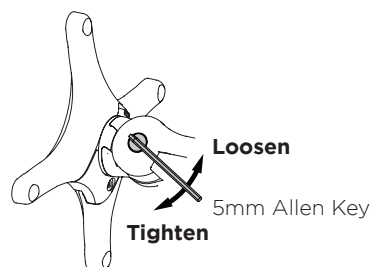


12. Adjusting the Display Bracket

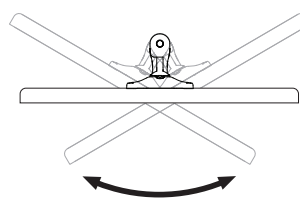
Portrait/ Landscape



Tilt (Screen angle up/down)



Pan (Screen angle left/right)



VESA 75 x 75 / 100 x 100mm

